

Public Notice Regarding Section 106 Review of Proposed Demolition of Six (6) Private Residential Buildings in St. Bernard Parish (523 Angela Avenue, 647-49 Angela Avenue, 750 Angela Avenue, 5322 East St. Bernard Highway, 5324 East St. Bernard Highway, and 2005 Bayou Road) – Seeking Public Comment

The high winds and heavy rains of Hurricanes Katrina and Rita and the subsequent widespread flooding damaged many buildings in St. Bernard Parish. In the aftermath of the hurricanes, the Federal Emergency Management Agency (FEMA) is issuing this public notice as a part of its responsibilities under 36 CFR Part 800, the regulations implementing Section 106 of the National Historic Preservation Act of 1966, as amended. This notice applies to activities carried out by the Public Assistance (PA) program implemented under the authority of the Robert T. Stafford Relief and Emergency Assistance Act, 42 U.S.C. §§ 5152-5206.

St. Bernard Parish is requesting that FEMA provide funds for the demolition and resultant debris removal of six (6) private residential buildings located in the parish. The regulations at 36 CFR Part 800 require FEMA, as the funding agency, to identify if any of the properties proposed for demolition are eligible for listing in the National Register of Historic Places (NRHP); to assess the effects the demolitions will have on historic properties; and to seek ways to avoid, minimize, or mitigate any adverse effects. FEMA, in consultation with the State Historic Preservation Office (SHPO), has determined that five (5) of the buildings proposed for demolition contribute to NRHP-listed or eligible historic districts and one (1) building is individually eligible for listing in the NRHP. The properties are listed below.

- 523 Angela Avenue, Arabi – Old Arabi Historic District (NRHP-listed)
- 647-49 Angela Avenue, Arabi – Old Arabi Historic District (NRHP-listed)
- 750 Angela Avenue, Arabi – Old Arabi Historic District (NRHP-listed)
- 5322 East St. Bernard Highway, Violet – Docville Farm Historic District (NRHP-eligible)
- 5324 East St. Bernard Highway, Violet – Docville Farm Historic District (NRHP-eligible)
- 2005 Bayou Road, St. Bernard – Individually NRHP-eligible

FEMA, in consultation with the SHPO, has determined that the proposed demolitions would result in adverse effects to historic properties, and has initiated consultation to seek ways to avoid, minimize, or mitigate adverse effects to historic properties that may result from the demolitions. Any member of the public is encouraged to provide views on how the project may affect historic properties and ways that these effects may be avoided, minimized, or mitigated. Comments may be submitted to FEMA for a 15-day period beginning on May 11, 2009 at www.crt.state.la.us/culturalassets/fema106 or by regular mail.

Mailed comments should be sent to:

FEMA Mail Center
Historic Preservation
1250 Poydras Street, Box #43
New Orleans, LA 70113

If mailed, comments and requests must be physically received at this address by May 26, 2009.

523 Angela Avenue, Arabi
Contributes to Old Arabi Historic District
29.95237677, -90.008059
Condemned by Parish



Figure 1. 523 Angela Avenue. Location and APE in relation to Old Arabi Historic District NRHP boundary.



Photograph 1. 523 Angela Avenue, Old Arabi Historic District (April 27, 2009).

647-49 Angela Avenue, Arabi
Contributes to Old Arabi Historic District
29. 95375676, -90.0073365
Condemned by Parish



Figure 1. 647-49 Angela Avenue. Location and APE in relation to Old Arabi Historic District NRHP boundary.



Photograph 1. 647-49 Angela Avenue, Old Arabi Historic District (April 27, 2009).

750 Angela Avenue, Arabi
Contributes to Old Arabi Historic District
29. 954822504, -90.007289084
Condemned by Parish

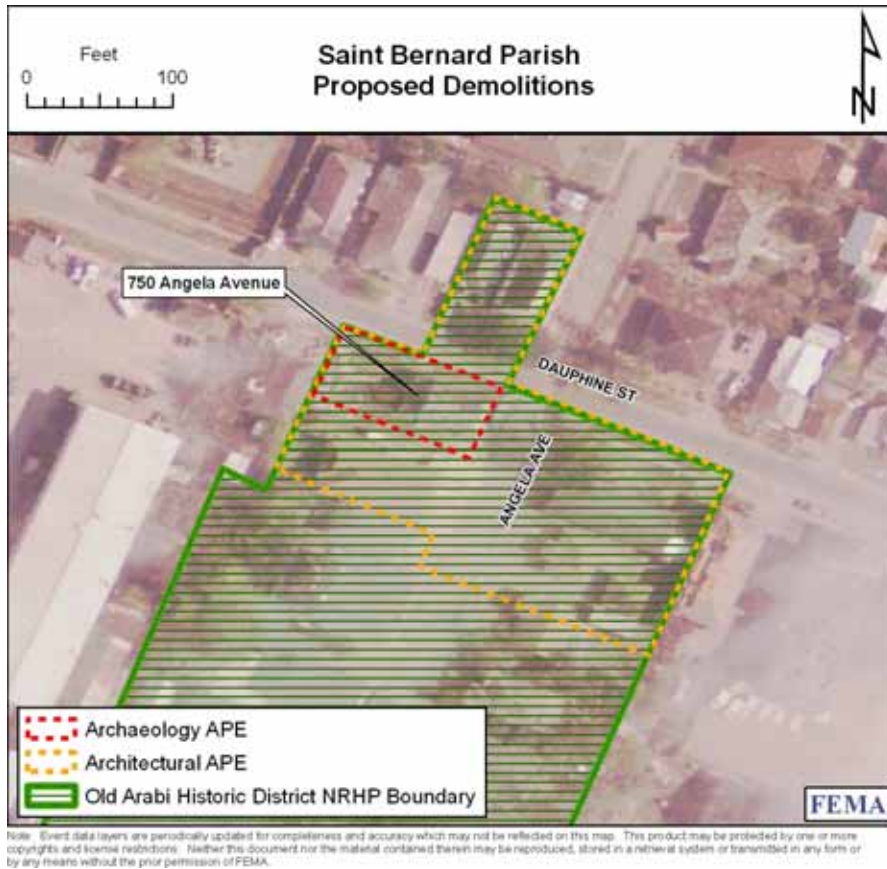


Figure 1. 750 Angela Avenue. Location and APE in relation to Old Arabi Historic District NRHP boundary.



Photograph 1. 750 Angela Avenue, Old Arabi Historic District (March 30, 2009).

**5322 East Saint Bernard Highway, Contributes to Docville Farm Historic District
29.910037140, -89.906275105
Condemned by Parish**



Figure 1. Overview of Docville Farm Historic District, showing NRHP boundary and locations of 5322 and 5324 East St. Bernard Highway (both proposed for demolition).



Photograph 1. 5322 East St. Bernard Highway, Docville Farm Historic District (March 30, 2009).

5324 East St. Bernard Highway, Contributes to Docville Farm Historic District
29.909910136, -89.906153680
Condemned by Parish

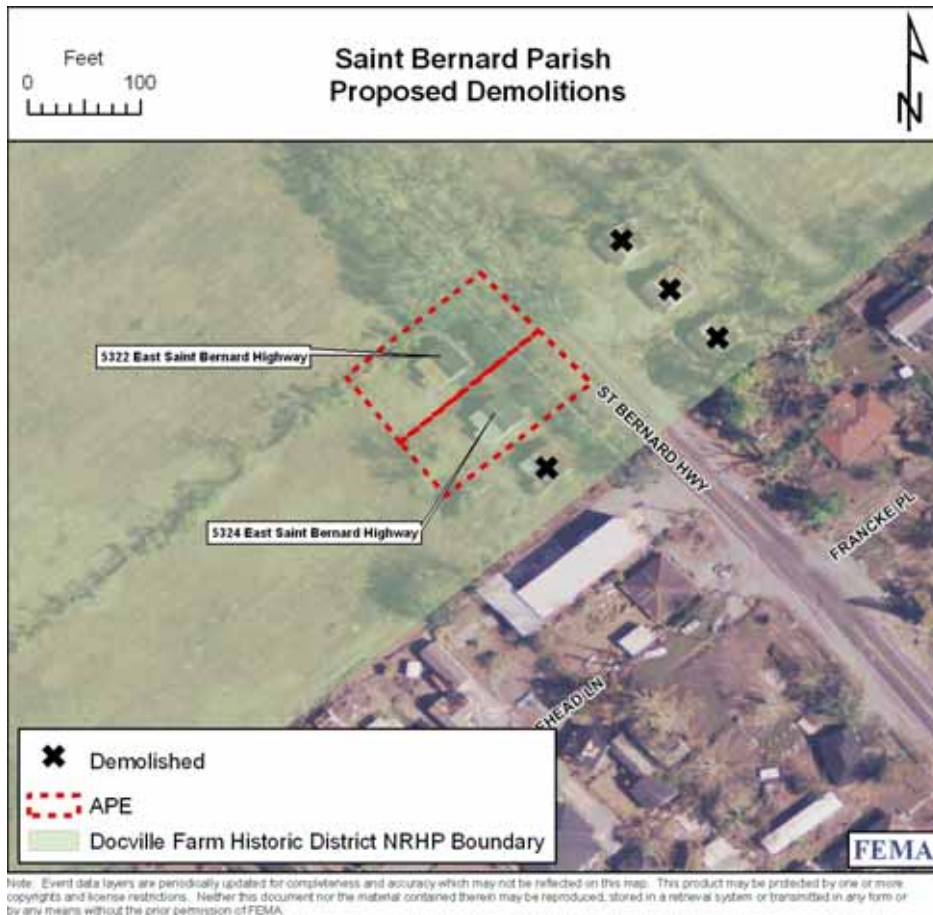


Figure 1. 5322 and 5324 East St. Bernard Highway, both proposed for demolition. Location and APE in relation to Docville Farm Historic District NRHP boundary.



Photograph 1. 5324 East St. Bernard Highway, Docville Farm Historic District (March 30, 2009).

**2005 Bayou Road (Joseph Serpas House), Individually Eligible
29.865835927, -89.841641516
Voluntary Demolition**



Figure 1. 2005 Bayou Road. Location and APE.



Photograph 1. 2005 Bayou Road, Joseph Serpas House (March 30, 2009).